

Installing & Configuring Windows 95 Generic/Text Printer Driver

Introduction

This application note explains how to install and configure the Windows 95 **Generic/Text** printer driver to operate with POS receipt printers.

Setting up the Generic/Text Printer Driver

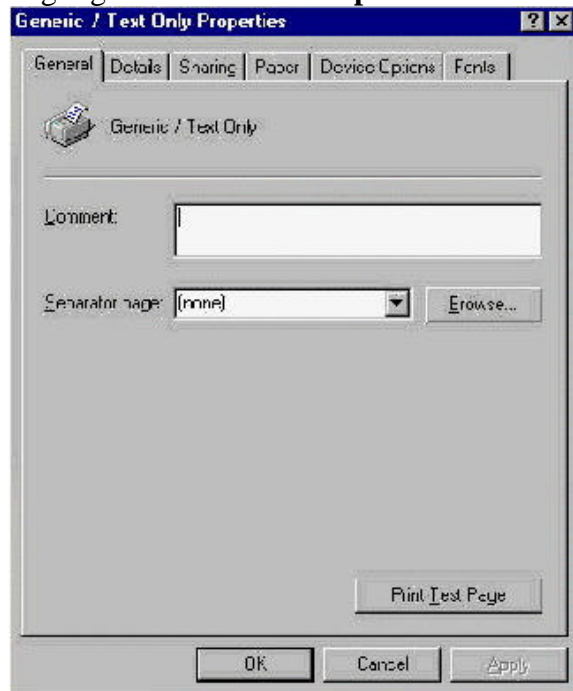
Point and click on the Windows 95 **Start** button.

Move the mouse pointer to highlight **Settings**, move the pointer to highlight **Printers** click the left mouse button.

The Printers window appears. Double click on the **Add Printers** icon. This activates the printer wizard. Follow through the installations based on your printer's connectivity and requirements. Scroll down the **Manufactures list** click on **Generic**, and then click on **Next**. Don't do a printer test at this time, click on **Finish**.

The **Generic/Text Only** printer icon will appear in the **Printers** window. Using the right mouse button click on the icon.

Highlight and click on **Properties** from the menu.

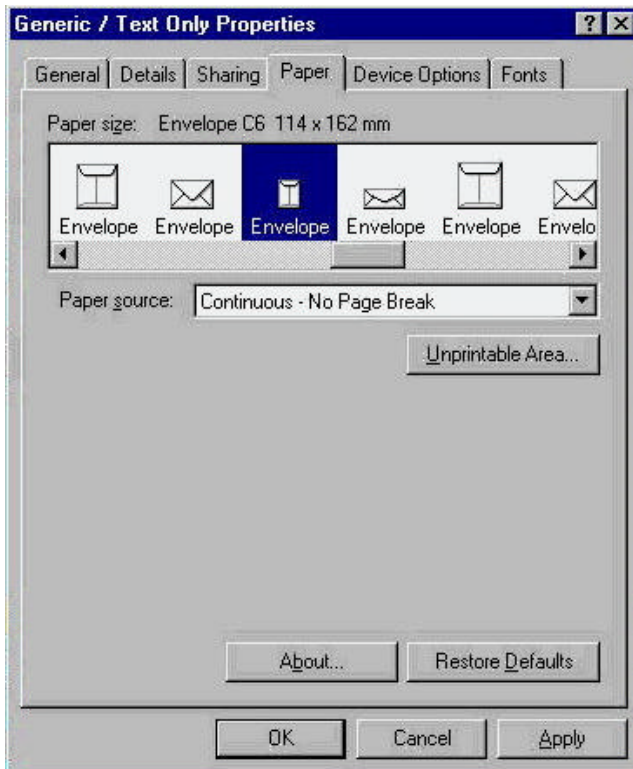


Configuring the Generic Printer

The escape sequences used as examples below, are from the Epson ESC/POS standards.

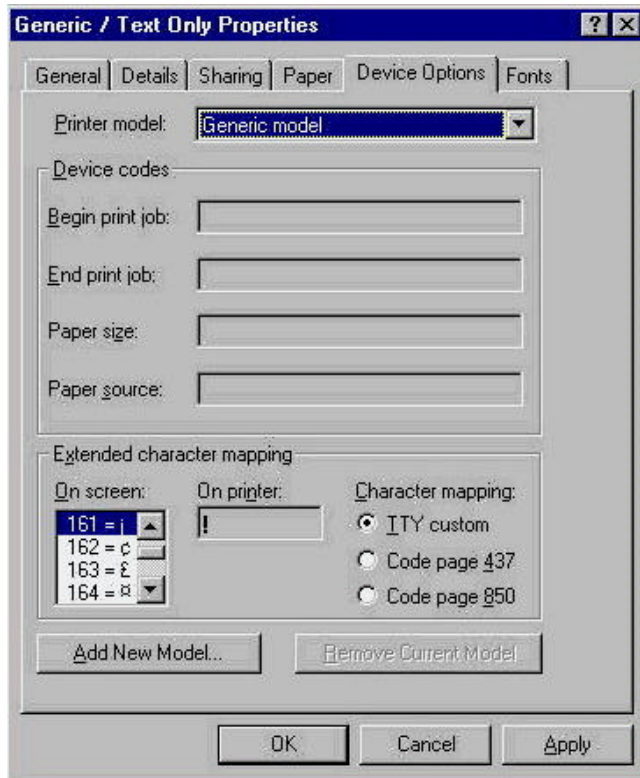
Click on the **Paper** tab. Select Envelope C6, the **Paper Size** description line indicates which envelope is selected.

Click on the Paper Source selection arrow and select **Continuous-No Page Break** option.



Click on the **Device Options** tab.

Place the mouse pointer in the **Begin Print Job** option entry box, click left mouse button.



The device code for the "Begin print Job" is sent to the printer at the beginning of a print job.

For example, for each print job, to enter a simple logo in an underlined font located in the center and reset to standard font.

Press the following keys (while in the edit box): Esc, !, 0, Ctrl-I, Ctrl-I, U, M, D, Esc, !, @

The codes appear in the box as: !0^I^IUMD!@

Place the mouse pointer in the **End Print Job** option entry box, click left mouse button.

The device code for the "End Print Job" is sent to the printer at the end of a print job.

For example, for each print job, to feed the paper up 8 lines and then cut the receipt.

Press the following keys (while in the edit box):

Ctrl-M, Ctrl-J, Ctrl-J, Ctrl-J, Ctrl-J, Ctrl-J, Ctrl-J, Ctrl-J, Ctrl-J, Esc, I

The codes appear in the box as: ^M^J^J^J^J^J^J^J^Ji

Windows 95 provides rudimentary editing operations in the code entry boxes, but allows most control and escape sequences to be entered for the beginning and end of print jobs.